



Become a WCHS member now!

Please support WCHS by joining as a member. Become a member today. If your membership has lapsed, please renew. The low annual membership fee of \$29 per household (\$79 for businesses) means everything to us and the homeless pets in our care. Dues-paying members are the backbone of WCHS.

Why is your membership important?

1. We need your support. WCHS operates the only no-kill, 100 percent spay/neuter shelter serving all of Whitman County, and the majority of funding comes from caring community members like you. Your membership contributes to the regular costs of caring for the hundreds of homeless pets we shelter each year.
2. There's strength in numbers. The size of our membership base demonstrates the importance of our role in, and service to, the community. This is vital when we apply for grants and build relationships with other city and county entities.
3. Members are our best volunteers. Although not all members are able to volunteer, growing our membership with active and caring individuals naturally increases our volunteer ranks with individuals who are dedicated to helping animals.

To verify your membership status, please contact our administrative office at 509-332-2246.

Our members get special privileges.

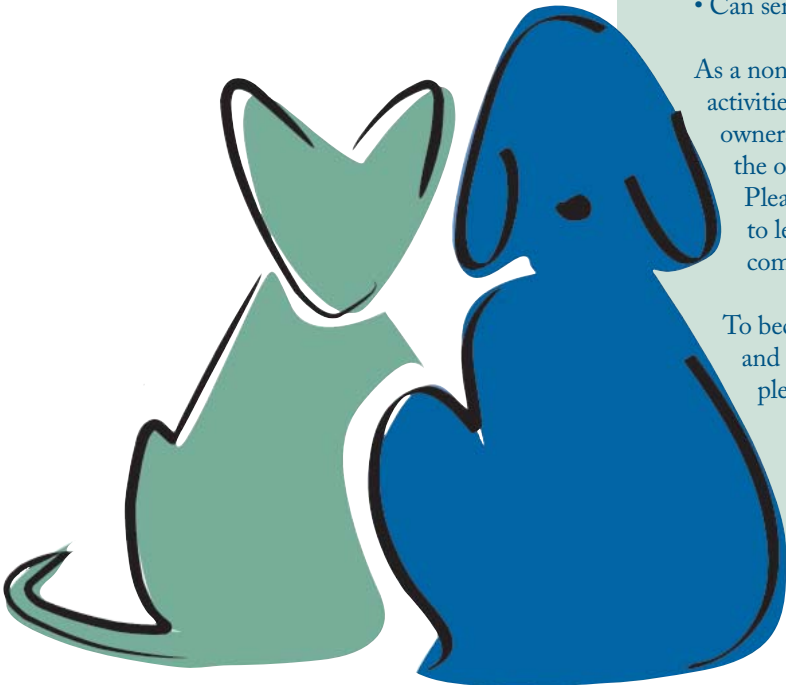
We love our members! In addition to being champions of the homeless pets of Whitman County, WCHS members:

- Receive the WCHS' newsletter, *Tip of the Tail*
- Participate in elections of the WCHS Board of Directors
- Can serve on the WCHS Board of Directors

As a nonprofit organization, WCHS operates a wide range of activities including a spay and neuter assistance program for pet owners, a foster care program, a microchip service which increases the opportunity for the return of lost pets, and much more. Please visit www.whitmanpets.org for more information and to learn how WCHS is making a difference in the lives of companion animals.

To become a member, please complete the form on the other side and return to the WCHS. To join or make a donation online, please visit our website at www.whitmanpets.org.

Thank you!

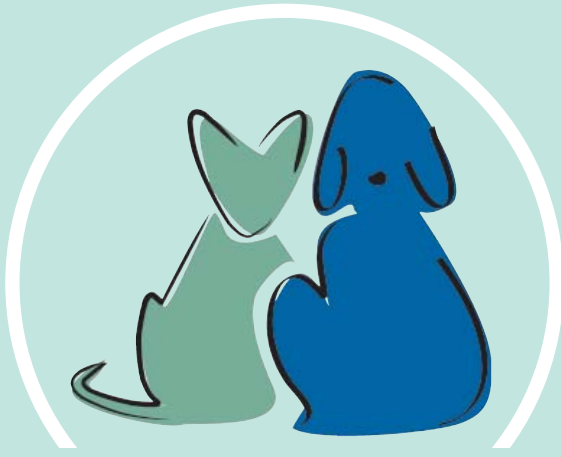


Whitman County Humane Society is a 501(c)(3) nonprofit organization incorporated in the state of Washington. Memberships and donations are deductible to the extent of the law.

Non-profit Org.
U.S. Postage
PAID
Pullman, WA
Permit No 42



Whitman County Humane Society, Inc.
P. O. Box 453,
Pullman, WA 99163



WHITMAN COUNTY
Humane Society

Become a WCHS member now!

Our mission is to promote humane treatment, spay and neutering, and responsible care of animals through public education and training programs. We provide a humane shelter environment and care for stray, abandoned, abused or neglected animals as well as provide adoption services of companion animals to the public.



Membership and/or Donation Form

Name _____
Address _____
City _____ State _____ Zip _____
E-mail _____

Basic Membership rate \$29

In addition to my membership fee, I'd also like to donate:

- Provider \$100
- Partner \$250
- Patron \$500
- Guardian \$1,000
- Other _____

Checks payable to:
Whitman County Humane Society

Mail to:
Whitman County Humane Society
PO Box 453
Pullman, WA 99163

For questions, e-mail
membership@whitmanpets.org